



# Precast Concrete Fence

---

**Pcp company**

**Pre cast concrete products company limited**

# PRE CAST CONCRETE FENCE

---

## DESIGN FLEXIBILITY

Limited Only by Your Imagination

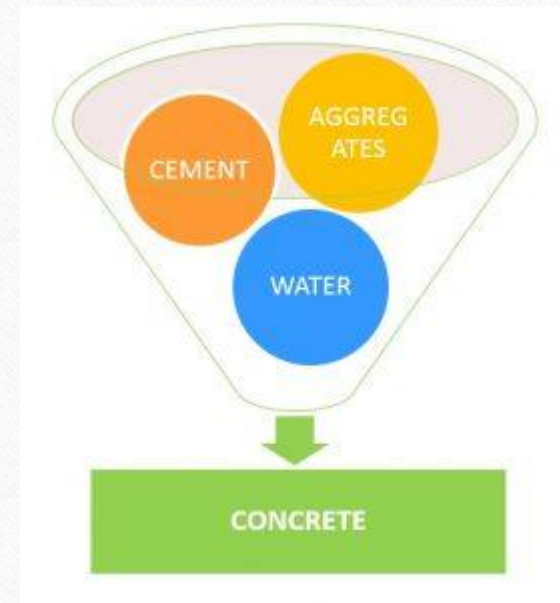
## BENEFITS OF PRECAST

Superior Strength and Durability

Safety and Protection

Ease of Installation

Consistent Quality :





- Because precast concrete products are typically produced in a controlled plant environment, they exhibit high quality and uniformity.
- Problems affecting quality typically found on a job site – temperature, curing conditions, craftsmanship and material quality – are nearly eliminated in a plant environment

### Reduced Weather Dependency :

- Precast concrete increases operating efficiency,
- because weather will not delay production.
- Weather conditions have a reduced effect on the
- schedule because precast requires less time to
- install than alternative methods such as cast-in-place
- and EIFS

- Because precast concrete products are typically produced in a controlled plant environment, they exhibit high quality and uniformity.
  - Problems affecting quality typically found on a job site – temperature, curing conditions, craftsmanship and material quality – are nearly eliminated in a plant environment
- 

### **Reduced Weather Dependency :**

- Precast concrete increases operating efficiency,
- because weather will not delay production.
- • Weather conditions have a reduced effect on the
- schedule because precast requires less time to
- install than alternative methods such as cast-in-place
- and EIFS.

## Environmentally Friendly •

- Besides water, concrete is the most frequently used material on earth.
  - It is nontoxic, environmentally safe and composed of natural materials •
- 

## Modularity •

- Because of the modular nature of precast concrete products, buildings of nearly any size can be accommodated.
- Precast products are designed and manufactured for simple connection to reduce installation time



## Efficiency

- Precast products arrive at the job site ready to install.
- No waste in the time schedule for cast-in-place work

## Low Maintenance

---

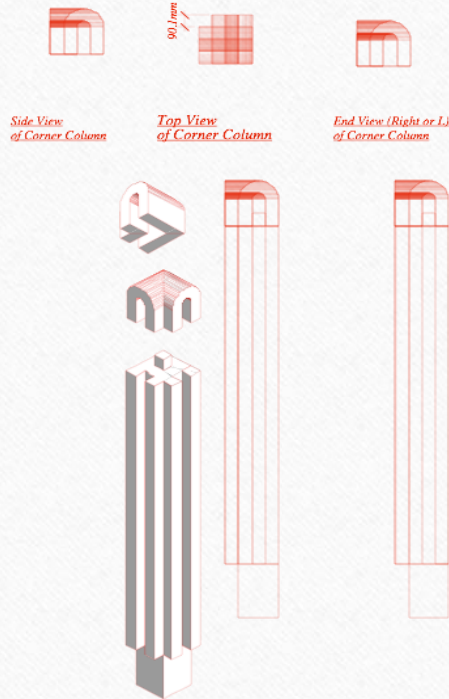
- Precast concrete requires little or no maintenance, which makes it the ideal choice for nearly any design solution.
- Other products, such as EIFS, may require repair after severe weather or impact

## Economical

- Precast concrete walls offer lower long-term costs when compared with other materials.
- Ease of installation, reduction in overall project timeline and total flexibility in design make precast the economical

## For Reinforced Calculation Concrete Fence (Volume , Reinforcing and Price )

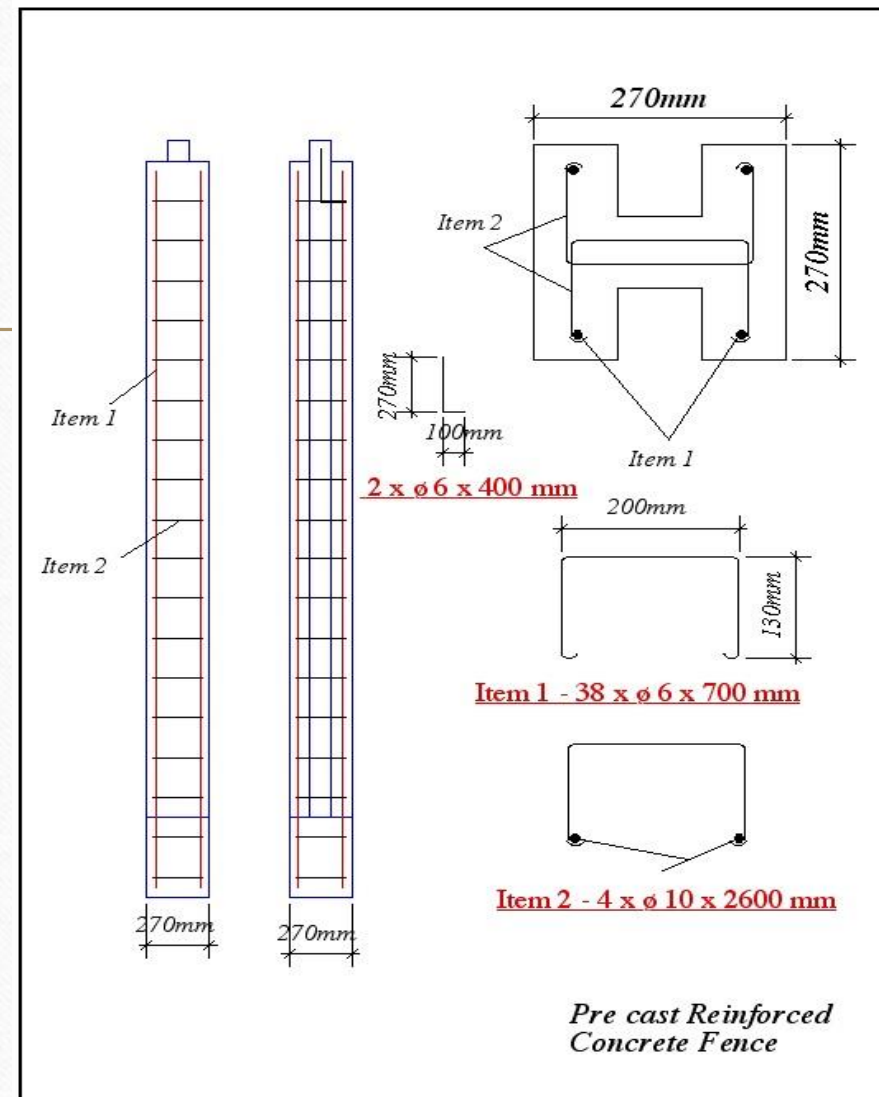
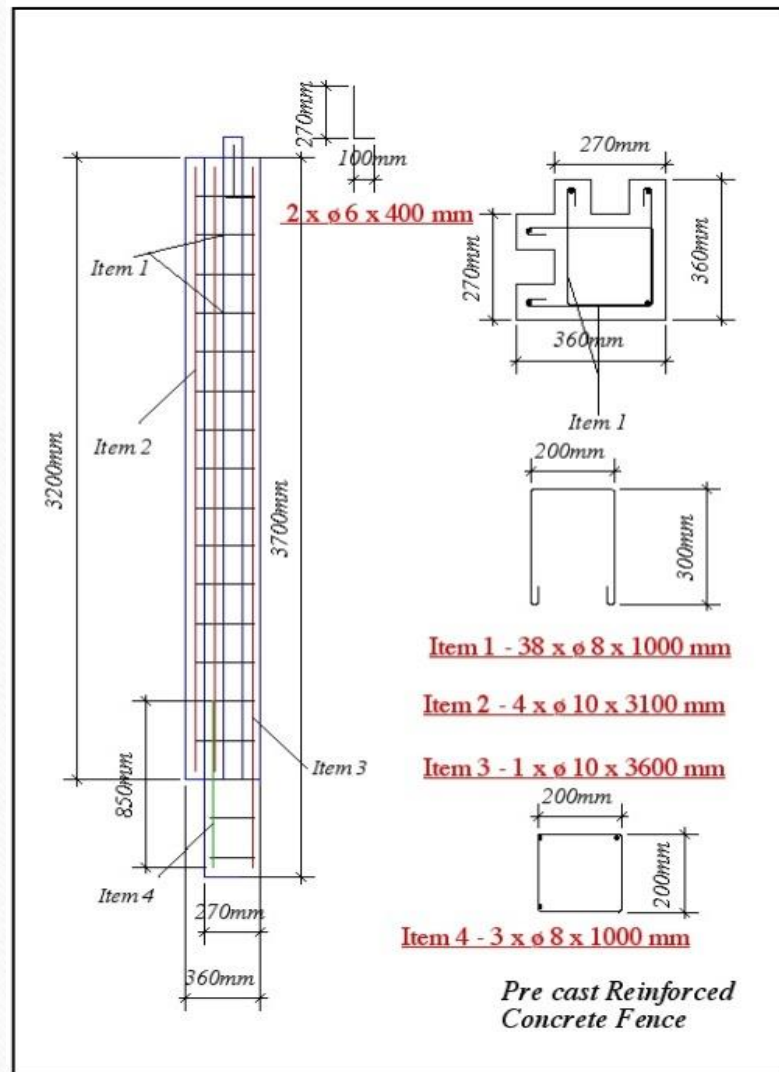
---



the length of corner column shall always be like all other wall columns, unless other wise specifically required length of corner column can be variable from The shown 2500 mm leaving a height of fencing of 1.8 upto fencing of 5.2 m 6000mm column length leaving a height of

Note:

for every extra length of 0.25 m add : 14kg of weight and 32 kg





# WHAT IS THE FENCE

---

A fence is a structure that encloses an area , typically outdoor , and is usually constructed from posts that are connected by boards , wire , rails or netting . A fence differs from a wall in not having a solid foundation along its whole length

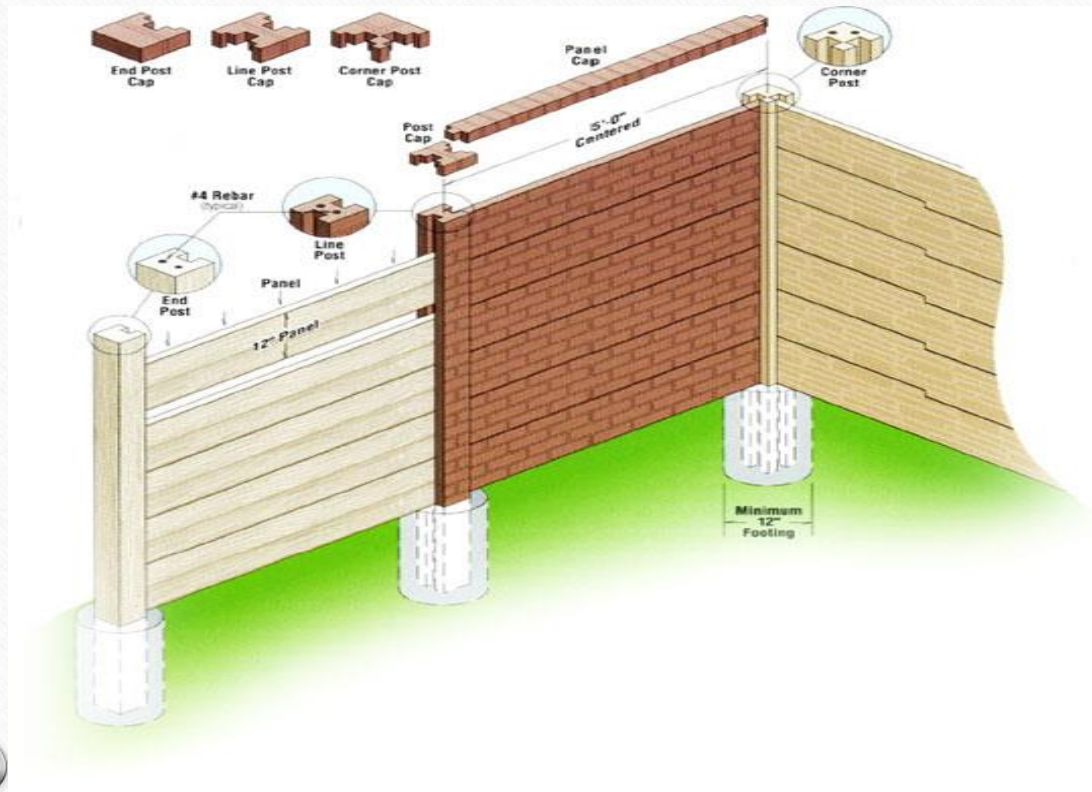
## Also :

A fence is a freestanding structure designed to restrict or prevent movement across a boundary. it is generally distinguished from a wall by the lightness of its construction a wall is usually restricted to such barriers made from solid brick or concrete , blocking vision as well as passage (though the definitions overlap somewhat )

Fences are constructed for several purposes including: agricultural fencing , privacy fencing , security fencing and decorative fencing .

## REQUIRED USE •

Types of areas or facilities often are required by law to be fenced in , for safety •  
and security reasons





**ur beautiful, architectural precast concrete fences have proven to be a valuable resource for contractors and home-owners.**

We review your project requirement and recommend site specific solutions to meet your objectives. One of the powerful benefits of our precast concrete fence system is its ability to be constructed quickly and its post and panel configuration allows unparalleled flexibility for changing site conditions. This, combined with a beautiful appearance and superior cost savings, makes the Imagine precast concrete product line a must have solution for almost any building project.

Whether you are building a commercial, residential, utility or municipal project; let the people at Imagine Precast Concrete Fencing show you how one of our precast fence systems can save you time and money while dramatically enhancing the value of your build and your client's satisfaction.



**Precast Concrete fence**  
our site installation work in Khartoum



- **FUNCTIONAL REQUIREMENTS OF BUILDING PRECAST FENCE**

- A fence or a wall of a building should satisfy the following requirements, in design and construction, to perform its basic function and to have an enhanced life period.

- **1. STRENGTH**

- A fence should be strong enough to take up the loads safely due to its own weight, super imposed loads and lateral pressure such as wind.
- 

- **2. STABILITY**

- It should be stable against overturning by lateral forces (due to wind load) and buckling caused by excessive slenderness.

- **3. WEATHER RESISTANCE**

- All the external fences, whether of load bearing or panel construction, should provide adequate resistance to rain, sun and wind penetration.

- **4. FIRE RESISTANCE**

- The fences should offer sufficient resistance to fire, as they behave as vertical barriers for spread of fire in the horizontal direction. So the walls should be made of such a material which neither ignite nor allow the spread of the fire through them.

- **5. HEAT INSULATION**

- It should be possible for walls to attain insulation against heat. For this, the walls are made either thicker, or cavity wall construction is employed. Heat insulating materials are also used in construction of walls.

- **6. SOUND INSULATION**

- The walls, both load bearing and non-load bearing, should be made of such materials and by such techniques, viz., cavity wall construction, so as to insulate building against indoor and outdoor noises.

- **7. PRIVACY & SECURITY**

- The walls, particularly external fences, should also provide sufficient privacy and afford security against burglary.
- In the design and construction of fences and walls, a balance between two primary considerations, namely strength and insulation against elements (such as heat, fire & weather), should be exercised.
- Generally precast concrete used now days for construction of building walls and faneces, as it satisfies most of the requirements.





## **ELEMENTS OF PCP PRECAST CONCRETE FENCE**

---

- **Footing and Short Column**
- **Beams**
- **Columns**
- **Concrete Crown**

## FOOTING AND SHORT COLUMN :



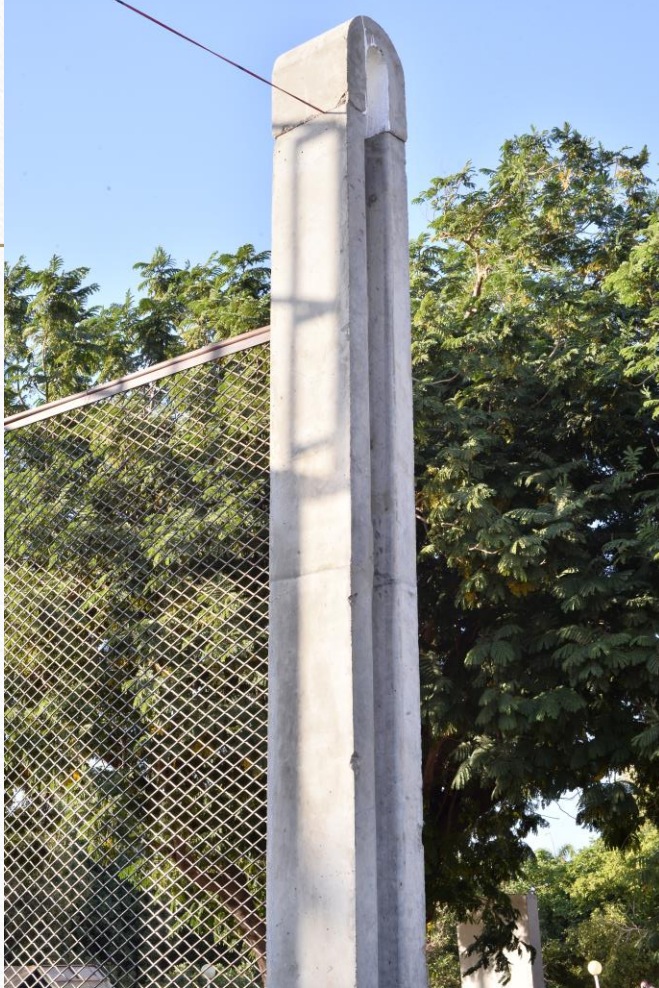


## BEAMS :





## COLUMNS :





## CONCRETE CROWN :



