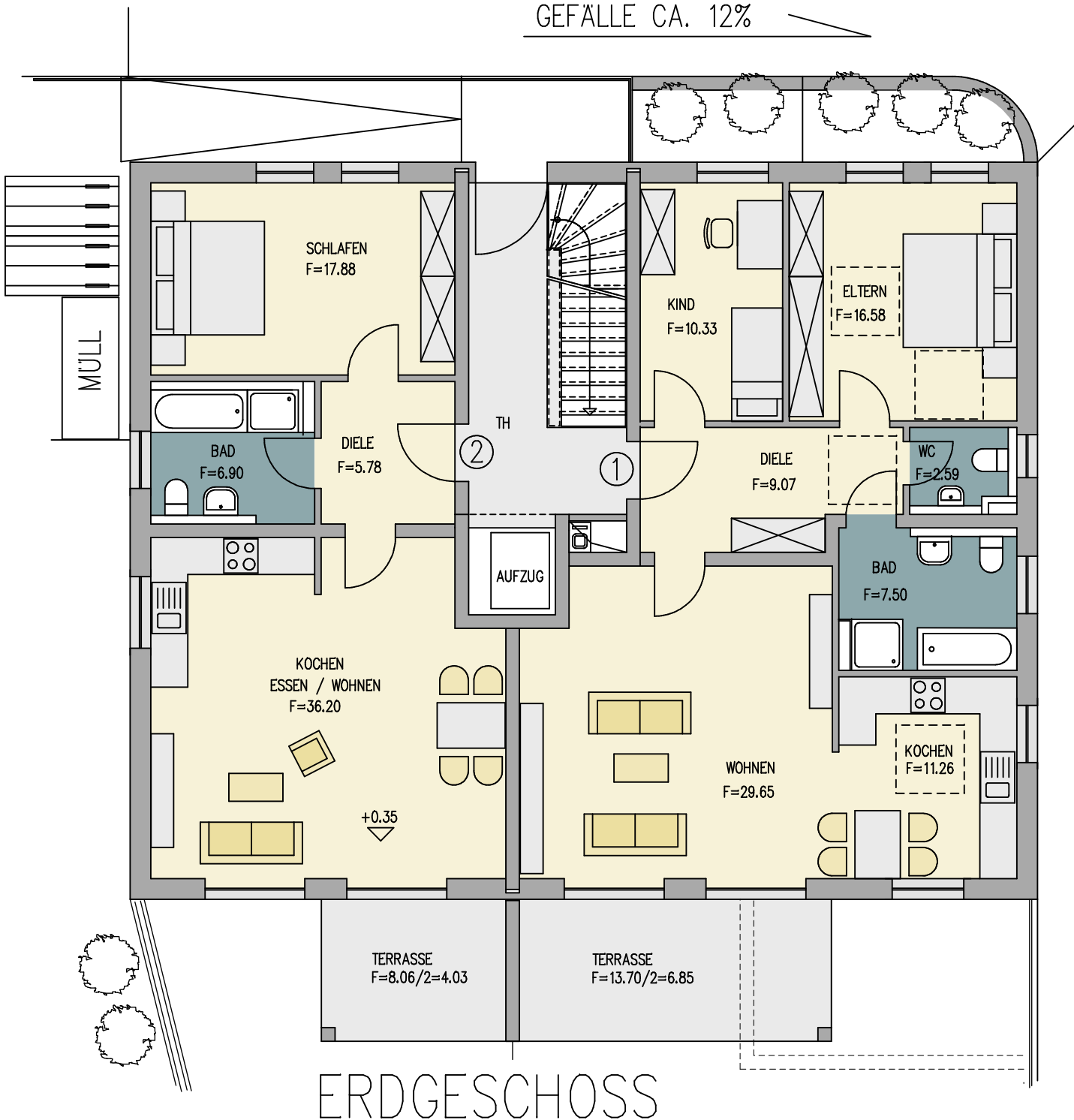


GEFÄLLE CA. 12%

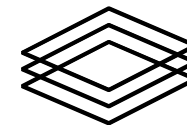
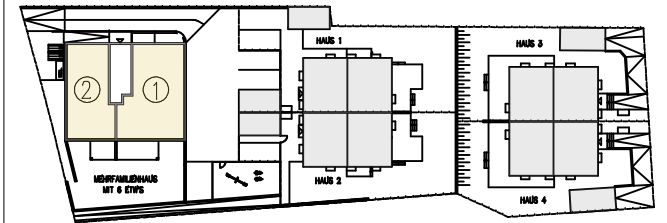


WOHNUNG ①  
ERDGESCHOSS – N/S/O  
WOHNFLÄCHE CA. 93.83 m<sup>2</sup>

WOHNUNG ②  
ERDGESCHOSS – N/S/W  
WOHNFLÄCHE CA. 70.79 m<sup>2</sup>



M 1:100



**FENDT**  
PLANEN | BAUEN

DONAUWORTHER STR. 3 b, 86368 GERSTHOFEN  
TELEFON 0821-650 97 -0  
TELEFAX 0821-650 971-20  
E-MAIL: MAIL@FENDT-PLANEN-BAUEN.DE